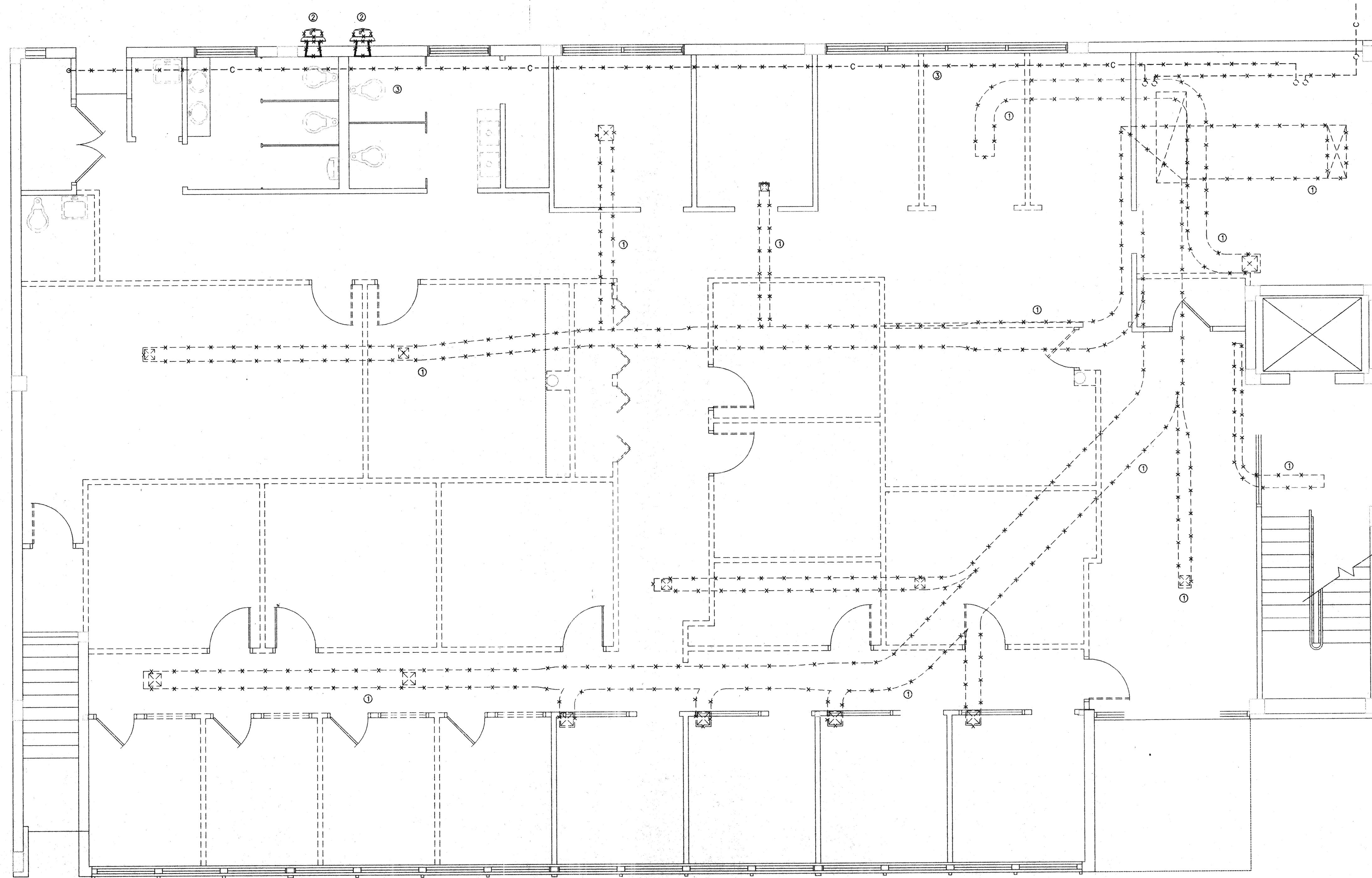


CAD FILE M:\9592\1STFLOOR\9592-101 PLOT DATE 12/05/95 AT 14:45 by JSF




1st FLOOR EXISTING  
AIR CONDITIONING PLAN

SCALE: 1/4" = 1'-0"



NOTE:

- ① CONTRACTOR SHALL REMOVE EXISTING DUCTWORK AS SHOWN.
- ② CONTRACTOR SHALL REMOVE EXISTING EXHAUST FAN AND GRILL. PATCH OPENING TO MATCH EXISTING.
- ③ CONTRACTOR SHALL REMOVE EXISTING CONDENSER WATER PIPING AS SHOWN.

Proj. Mgr. JHB	CONSULTANT
Job Capt. JHB	
Drawn by LAH	<b>QED ENGINEERING, INC.</b> CONSULTING ENGINEERS
Rev'd by JFP	3901 SW 47th Ave, Suite 402 Certificate No. EB0005720 Davie, Florida 33314 Ph 305-791-2020 Fx 584-2345

©COPYRIGHT  
THIS DOCUMENT IS PROPERTY OF PEACOCK COURTNEY ARCHITECTS, P.A. AND NO PART HEREIN SHALL BE USED EXCEPT FOR THE SPECIFIC PROJECT WITHOUT CONSENT OF PEACOCK COURTNEY ARCHITECTS, P.A.

THIS DOCUMENT WAS PREPARED BY PEACOCK COURTNEY ARCHITECTS, P.A. ACCORDING TO THE TERMS OF THE GENERAL CONDITIONS OF THE CONTRACT FOR CONSTRUCTION. THIS DOCUMENT DOES NOT EITHER IN WHOLE OR IN PART CONSTITUTE ANY DIRECTION OR INSTRUCTION TO ANY CONTRACTOR WITH REGARD TO CONSTRUCTION MEANS, METHODS OR TECHNIQUES. BY THIS DOCUMENT THE ARCHITECT DOES NOT INTEND TO EXPRESS ANY OPINION, DIRECTION OR INSTRUCTION OF ANY KIND WHATSOEVER AS TO THE MANNER IN WHICH THE CONSTRUCTION WORK IS TO BE ACCOMPLISHED.

Description:  
Revisions

**peacock courtney architects**  
800 fairway drive suite 292  
deerfield beach, florida 33441 (305)428-8000

Project  
**VILLAGE OF  
MIAMI SHORES  
POLICE  
DEPARTMENT**  
THE VILLAGE OF  
MIAMI SHORES

Sheet Title  
**First Floor  
Existing Floor Plan**

DATE  
12/06/95

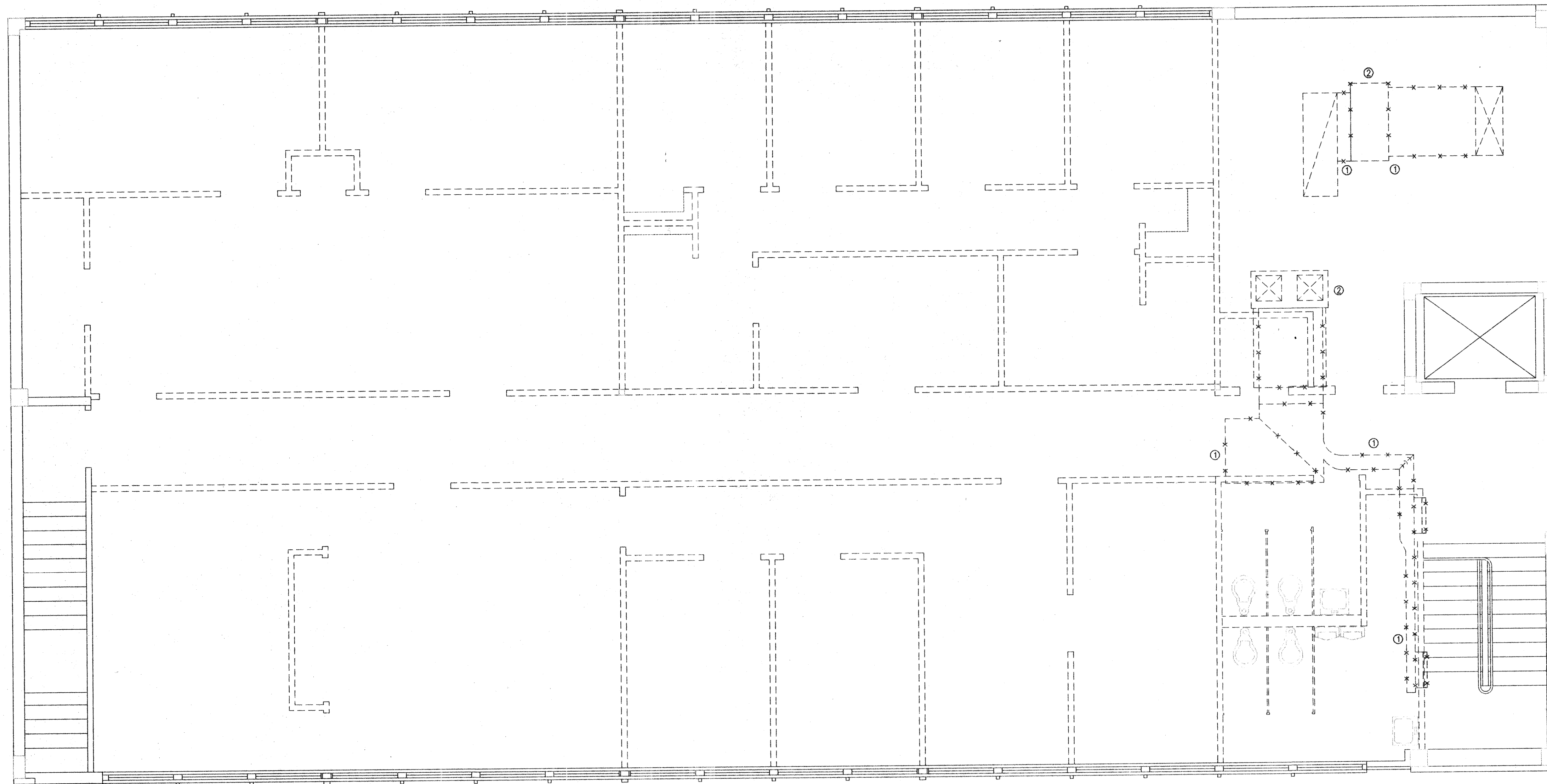
Sheet No.

PROJECT No.  
9592

**M-1**


*[Handwritten signature]*  
12/1/95

CAD FILE N:\9592\2ND FLOOR\9592-M02 PLOT DATE 12/06/95 AT 14:56 BY JSF



2nd FLOOR EXISTING  
AIR CONDITIONING PLAN  
SCALE: 1/4" = 1'-0" NORTH

- NOTE:
- ① CONTRACTOR SHALL REMOVE EXISTING DUCTWORK AS SHOWN.
  - ② CONTRACTOR SHALL REMOVE EXISTING AIR HANDLING UNITS, PIPING, AND ASSOCIATED DUCTWORK.

Proj. Mgr. JHB	CONSULTANT
Job Capt. JHB	
Drawn by LAH	<b>OED ENGINEERING, INC.</b> CONSULTING ENGINEERS
Rev'd by JFP	3901 SW 47th Ave. Suite 402 Certificate No. EB0005720 Davie, Florida 33314 Ph 305-791-2020 Fx 584-2345

©COPYRIGHT  
THIS DOCUMENT IS PROPERTY OF PEACOCK COURTNEY, P.A. AND NO PART HEREIN SHALL BE USED EXCEPT FOR THE SPECIFIC PROJECT WITHOUT CONSENT OF PEACOCK COURTNEY ARCHITECTS, P.A.

THIS DOCUMENT WAS PREPARED BY PEACOCK COURTNEY ARCHITECTS, P.A. ACCORDING TO THE TERMS OF THE GENERAL CONDITIONS OF THE CONTRACT FOR CONSTRUCTION. THIS DOCUMENT DOES NOT EITHER IN WHOLE OR IN PART CONSTITUTE ANY DIRECTION OR INSTRUCTION TO ANY CONTRACTOR WITH REGARD TO CONSTRUCTION MEANS, METHODS, OR TECHNIQUES. BY THIS DOCUMENT THE ARCHITECT DOES NOT INTEND TO EXPRESS ANY OPINION, DIRECTION OR INSTRUCTION OF ANY KIND WHATSOEVER AS TO THE MANNER IN WHICH THE CONSTRUCTION WORK IS TO BE ACCOMPLISHED.

Description:  
Revisions

**peacock courtney architects**  
800 fairway drive suite 292  
deerfield beach, florida 33441 (305)428-8000

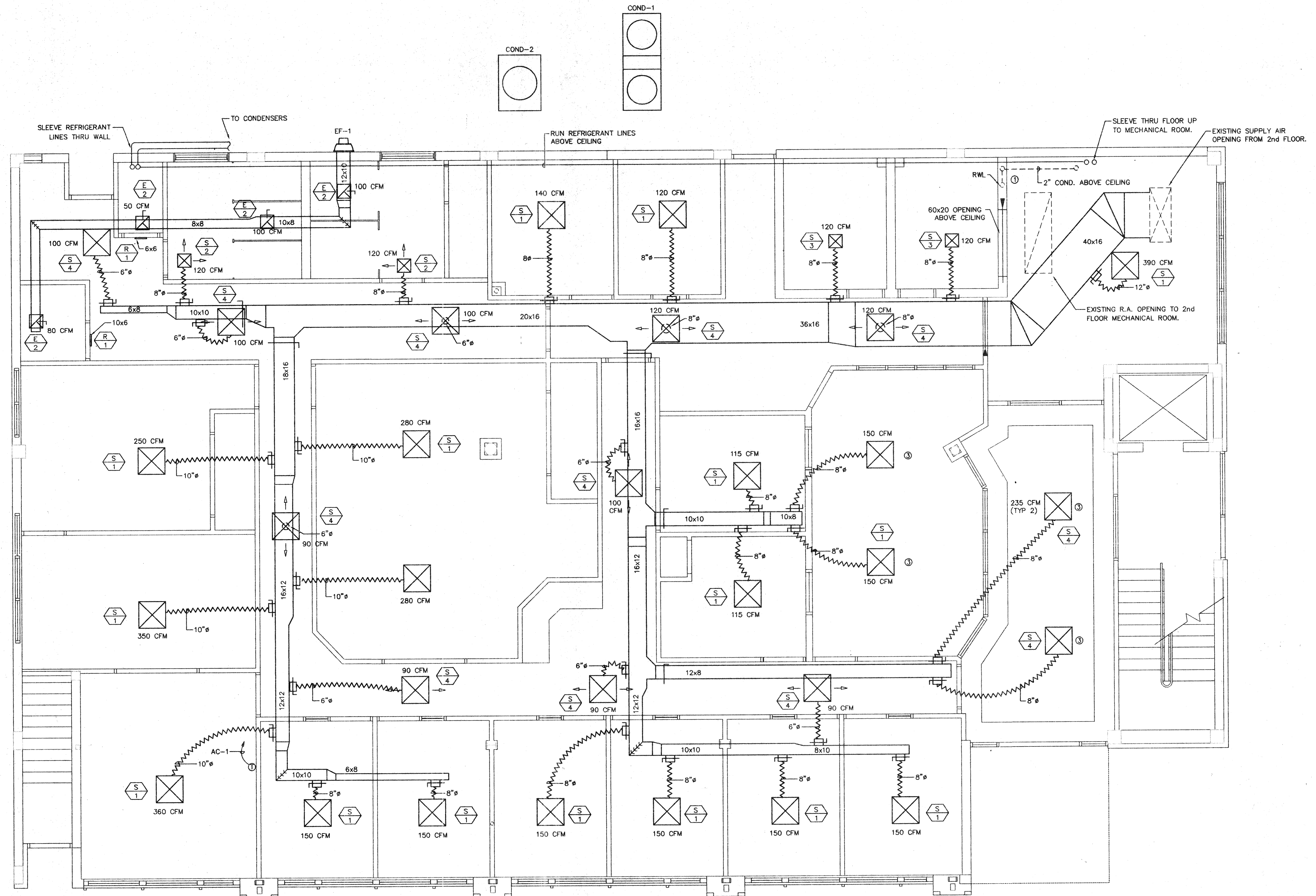
Project  
**VILLAGE OF MIAMI SHORES POLICE DEPARTMENT**  
THE VILLAGE OF MIAMI SHORES

Sheet Title  
**Second Floor Existing Floor Plan**

DATE 12/06/95	Sheet No.
PROJECT No. 95901	<b>M-2</b>

*[Signature]*  
12/7/95

CAD FILE M:\9592\1STFLOOR\9592-003 PLOT DATE 12/07/95 AT 06:25 BY JFP



- NOTE:
- ① CONTRACTOR SHALL CONNECT 2" CONDENSATE TO EXISTING RAIN WATER LEADER.
  - ② EXHAUST DUCTWORK TO BE GALVANIZED SHEET METAL. ALL OTHER DUCTWORK TO BE 1 1/2" FIBERGLASS.
  - ③ CONTRACTOR SHALL INSTALL SURFACE MOUNTED DIFFUSERS AS SHOWN. (SEE DETAIL "1", SHEET M-5.)
  - ④ CEILING TO BE RETURN AIR PLENUM. NO COMBUSTIBLES PERMITTED. RETURN AIR THROUGH LIGHT FIXTURES.
  - ⑤ CORRIDOR 1HR FIRE RATED. CORRIDOR DIFFUSERS TO BE BZZU MOUNTED PER MANUFACTURERS RECOMMENDATIONS.

Proj. Mgr. JHB  
 Job Capt. JHB  
 Drawn by LAH  
 Rev'd by JFP  
 CONSULTANT  
**OED ENGINEERING, INC.**  
 CONSULTING ENGINEERS  
 3901 SW 47th Ave. Suite 402  
 Davie, Florida 33314  
 Ph 305-791-2020 Fx 584-2345

©COPYRIGHT  
 THIS DOCUMENT IS PROPERTY OF PEACOCK COURTNEY ARCHITECTS, P.A. AND NO PART HEREIN SHALL BE USED EXCEPT FOR THE SPECIFIC PROJECT WITHOUT THE WRITTEN CONSENT OF PEACOCK COURTNEY ARCHITECTS, P.A.  
 THIS DOCUMENT WAS PREPARED BY PEACOCK COURTNEY ARCHITECTS, P.A. ACCORDING TO THE TERMS OF THE GENERAL CONDITIONS OF THE CONTRACT FOR CONSTRUCTION. THIS DOCUMENT DOES NOT EITHER IN WHOLE OR IN PART CONSTITUTE ANY DIRECTION OR INSTRUCTION TO ANY CONTRACTOR WITH REGARD TO CONSTRUCTION MEANS, METHODS OR TECHNIQUES. BY THIS DOCUMENT THE ARCHITECT DOES NOT INTEND TO EXPRESS ANY OPINION, DIRECTION OR INSTRUCTION OF ANY KIND WHATSOEVER AS TO THE MANNER IN WHICH THE CONSTRUCTION WORK IS TO BE ACCOMPLISHED.  
 Description:  
 Revisions:

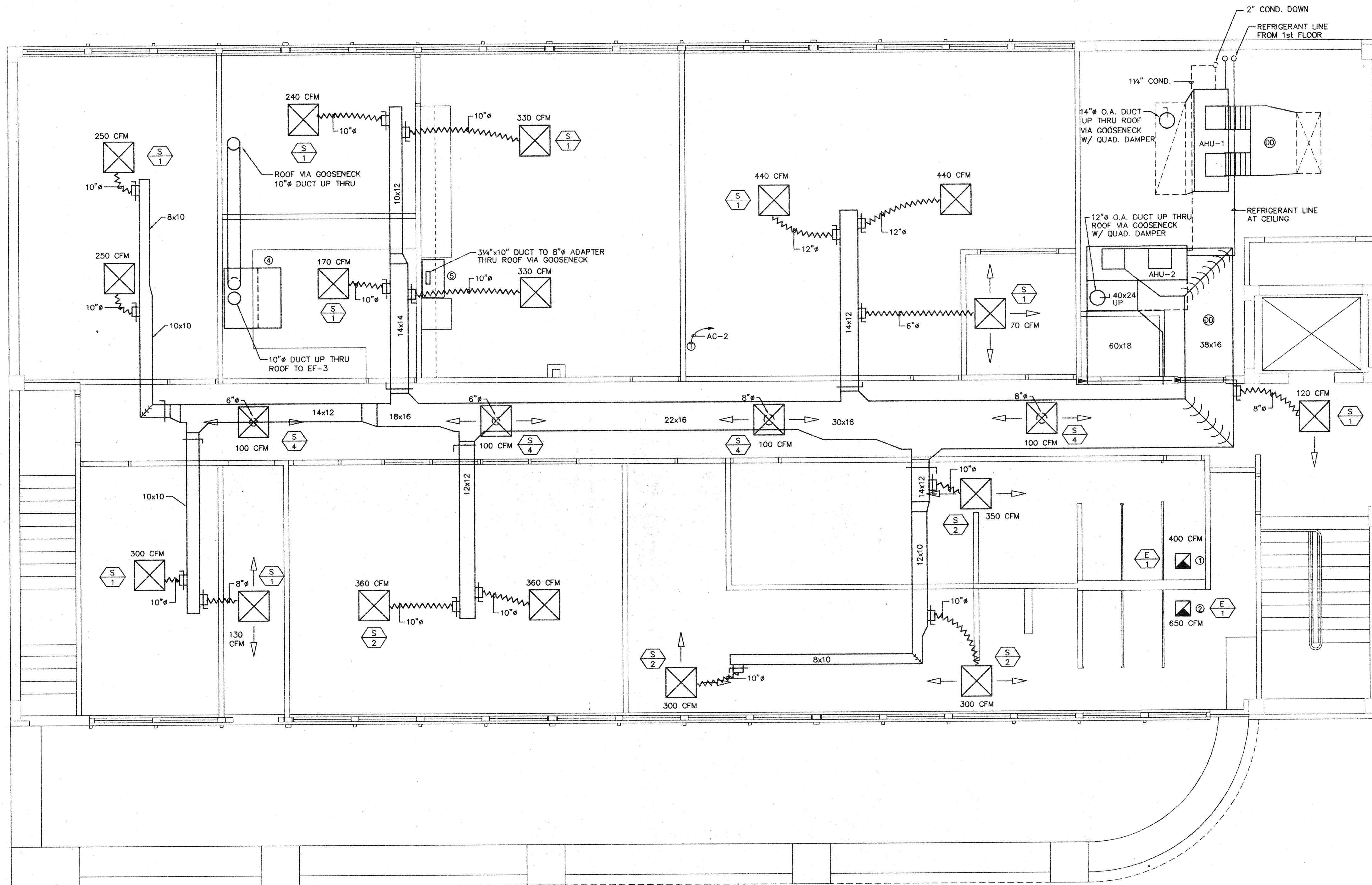
**peacock courtney architects**  
 800 fairway drive suite 292  
 deerfield beach, florida 33441 (305)428-8000

Project  
**VILLAGE OF MIAMI SHORES POLICE DEPARTMENT**  
 THE VILLAGE OF MIAMI SHORES

Sheet Title  
**First Floor New Floor Plan**

DATE 12/06/95  
 PROJECT No. 95901  
 Sheet No. **M-3**

CAD FILE M:\9592\2ND FLOOR\9592-M04 PLOT DATE 12/07/95 AT 08:43 BY JFP



2nd FLOOR NEW  
AIR CONDITIONING PLAN

SCALE: 1/4" = 1'-0"

NORTH

- NOTE:
- ① CONTRACTOR SHALL INSTALL 16x16 EXHAUST GRILL AND CONNECT 12x10 EXHAUST RISER TO ROOF FAN. (SEE DETAIL "E", SHEET M-5)
  - ② CONTRACTOR SHALL INSTALL 16x16 EXHAUST GRILL AND CONNECT 14x12 EXHAUST RISER TO ROOF FAN. (SEE DETAIL "E", SHEET M-5)
  - ③ EXHAUST DUCTWORK TO BE GALVANIZED SHEET METAL. ALL OTHER DUCTWORK TO BE 1 1/2" FIBERGLASS.
  - ④ CONTRACTOR SHALL INSTALL KEWAUNEE AUXILIARY AIR, AIRFLOW SUPREME BENCH TYPE FUME HOOD, MODEL # SH-1504-G.
  - ⑤ CONTRACTOR SHALL INSTALL 30" CONVERTIBLE PRESTIGE RANGE HOOD, BROAN MODEL # 763001, AND ASSOCIATED DUCTWORK.
  - ⑥ SHEET METAL REAR RETURN BOX 25" HIGH, 24" DEEP, 78" LONG. CONNECT 40 x 24 UP TO 60 x 18 R.A. W/ (1" x 1" SCREEN).

Proj. Mgr. JHB  
Job Capt. JHB  
Drawn by LAH  
Rev'd by JFP

CONSULTANT  
**QED**  
**QED ENGINEERING, INC.**  
CONSULTING ENGINEERS  
3901 SW 47th Ave. Suite 402  
Davie, Florida 33314  
Ph 305-791-2020 Fx 584-2345

©COPYRIGHT  
THIS DOCUMENT IS PROPERTY OF PEACOCK COURTNEY ARCHITECTS, P.A. AND NO PART HEREIN SHALL BE USED EXCEPT FOR THE SPECIFIC PROJECT WITHOUT CONSENT OF PEACOCK COURTNEY ARCHITECTS, P.A.

THIS DOCUMENT WAS PREPARED BY PEACOCK COURTNEY ARCHITECTS, P.A. ACCORDING TO THE TERMS OF THE GENERAL CONDITIONS OF THE CONTRACT FOR CONSTRUCTION. THIS DOCUMENT DOES NOT EITHER IN WHOLE OR IN PART CONSTITUTE ANY DIRECTION OR INSTRUCTION TO ANY CONTRACTOR WITH REGARD TO CONSTRUCTION MEANS, METHODS OR TECHNIQUES. BY THIS DOCUMENT THE ARCHITECT DOES NOT INTEND TO EXPRESS ANY OPINION, DIRECTION OR INSTRUCTION OF ANY KIND WHATSOEVER AS TO THE MANNER IN WHICH THE CONSTRUCTION WORK IS TO BE ACCOMPLISHED.

Description:  
Revisions

**peacock courtney architects**  
800 fairway drive suite 292  
deerfield beach, florida 33441 (305)428-8000

Project  
**VILLAGE OF MIAMI SHORES POLICE DEPARTMENT**  
THE VILLAGE OF MIAMI SHORES

Sheet Title  
**Second Floor New Floor Plan**

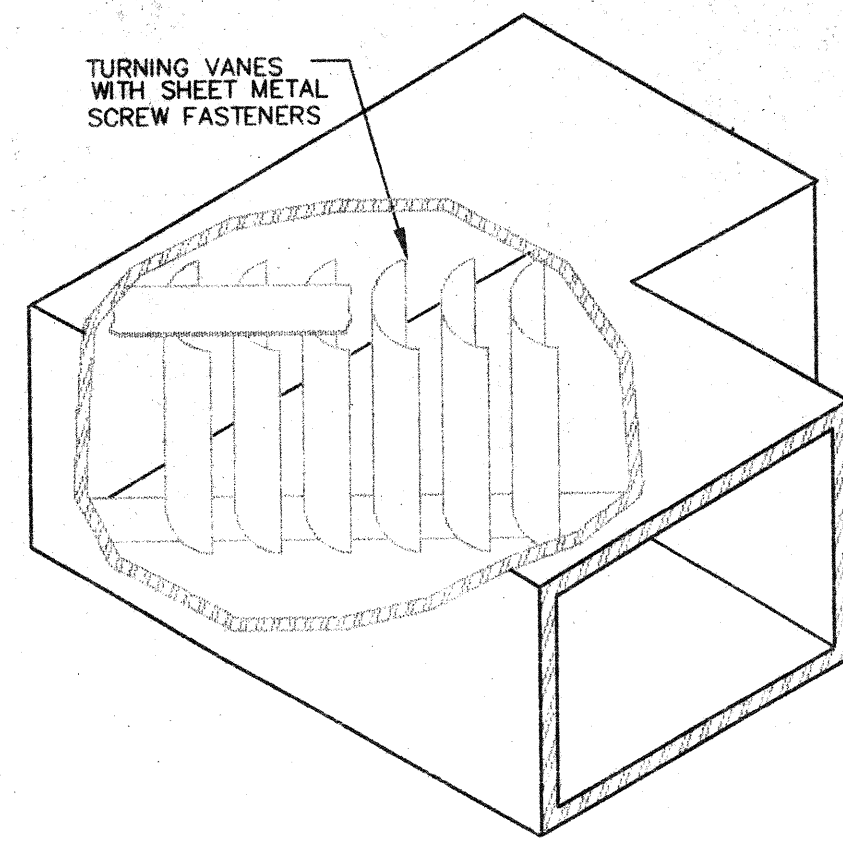
DATE  
12/06/95

Sheet No.

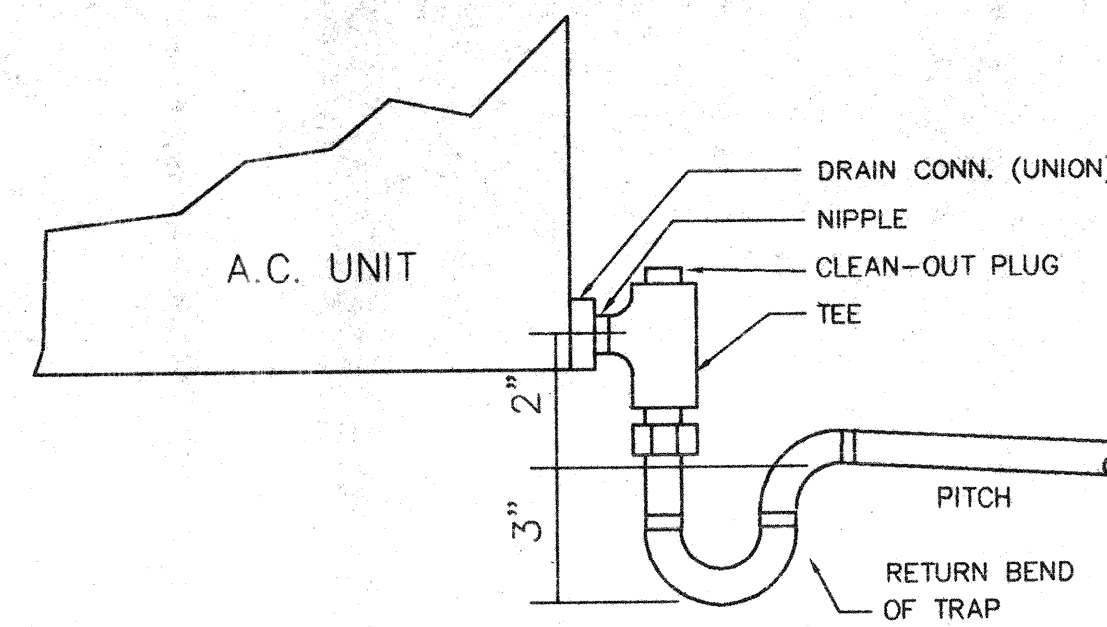
PROJECT No.  
95901

**M-4**

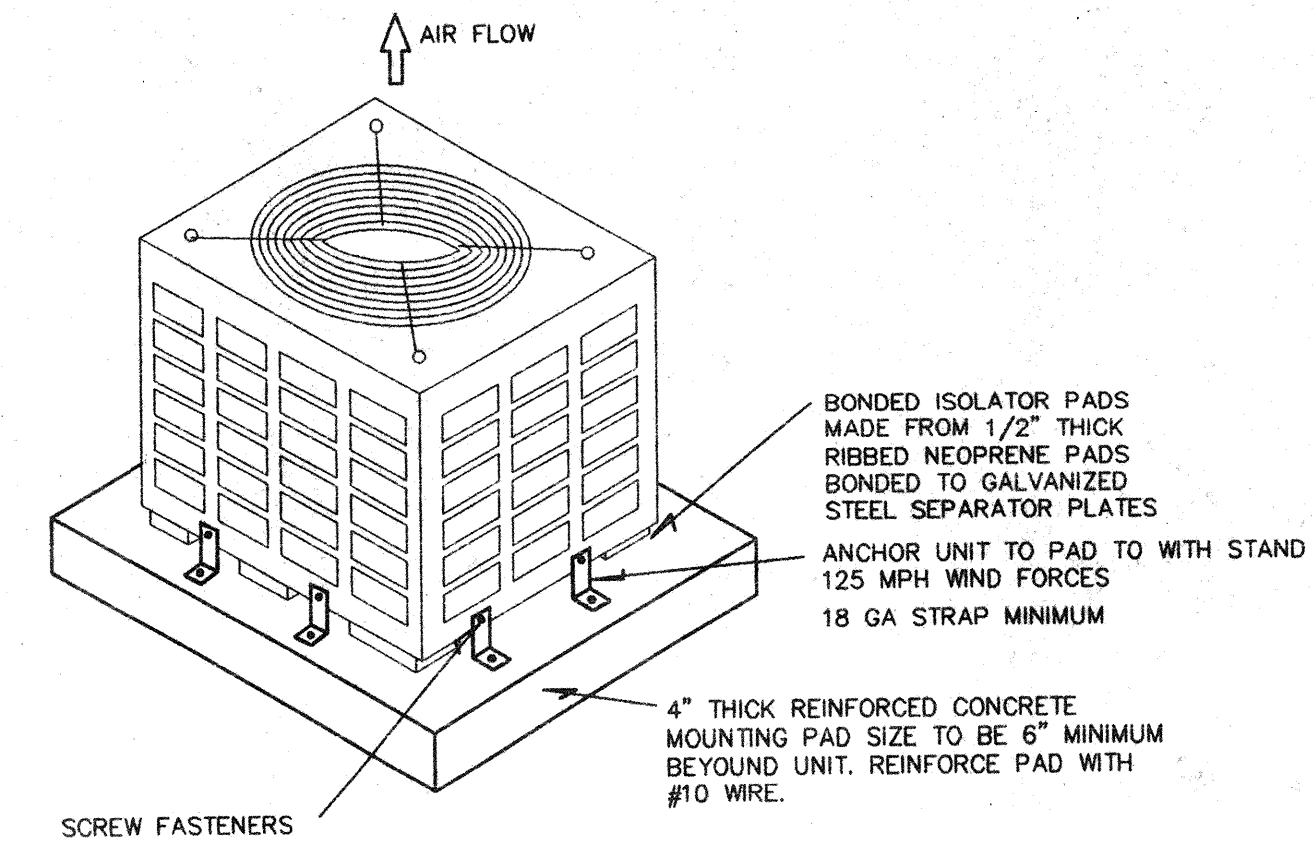
*JFP*  
12/7/95



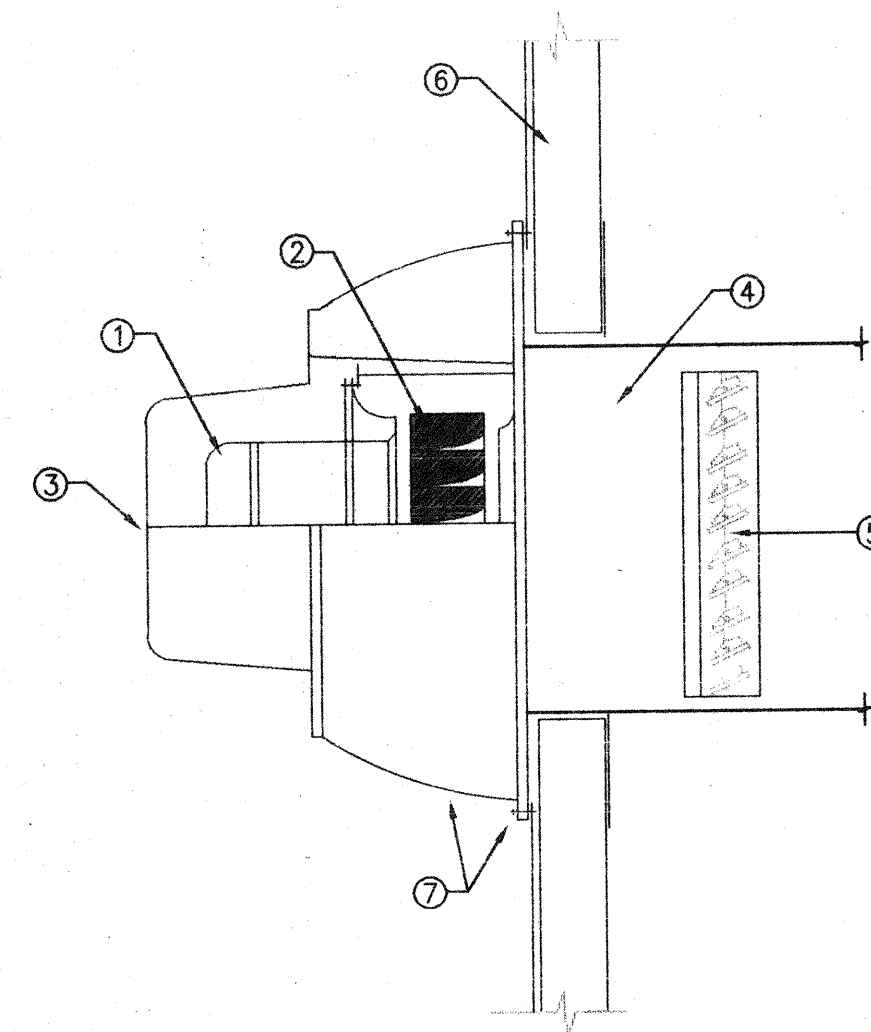
**A** TYPICAL ELBOW  
M-5 NO SCALE AD-ELBOW



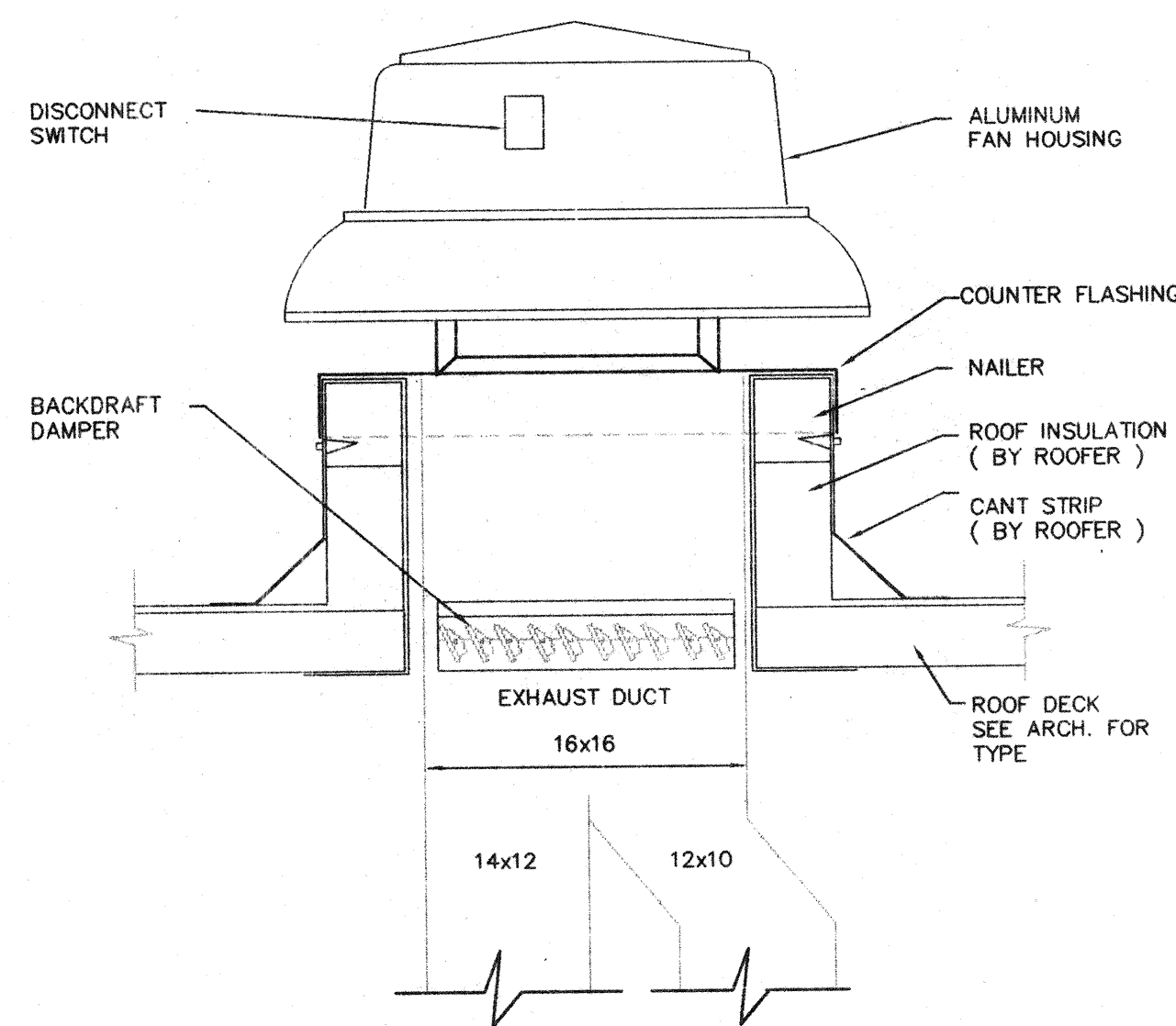
**B** CONDENSATE LINE TRAP DETAIL  
M-5 NO SCALE AD-PAN



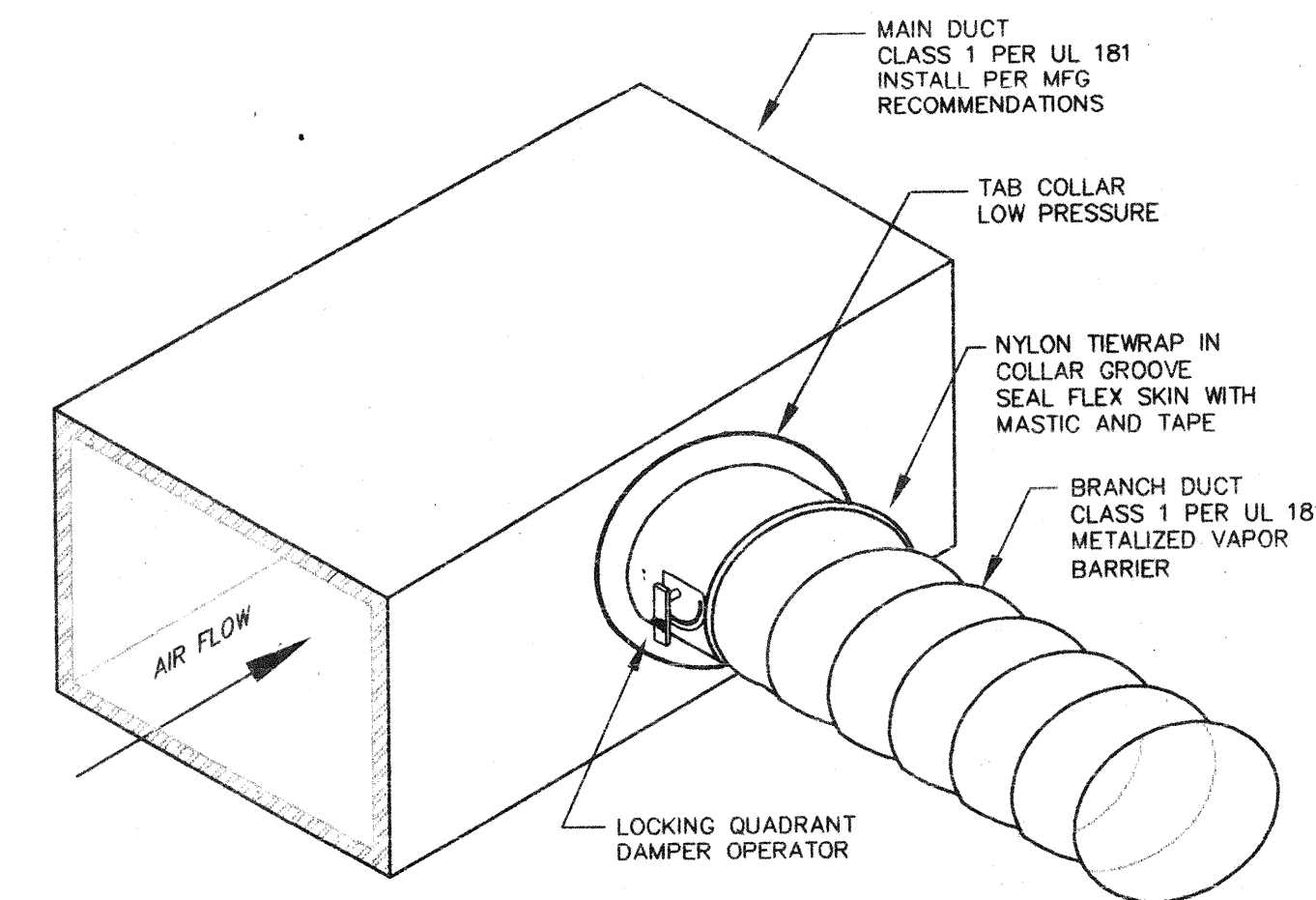
**C** AIR COOLED CONDENSER MOUNTING DETAIL  
M-5 NO SCALE AS-STAN9



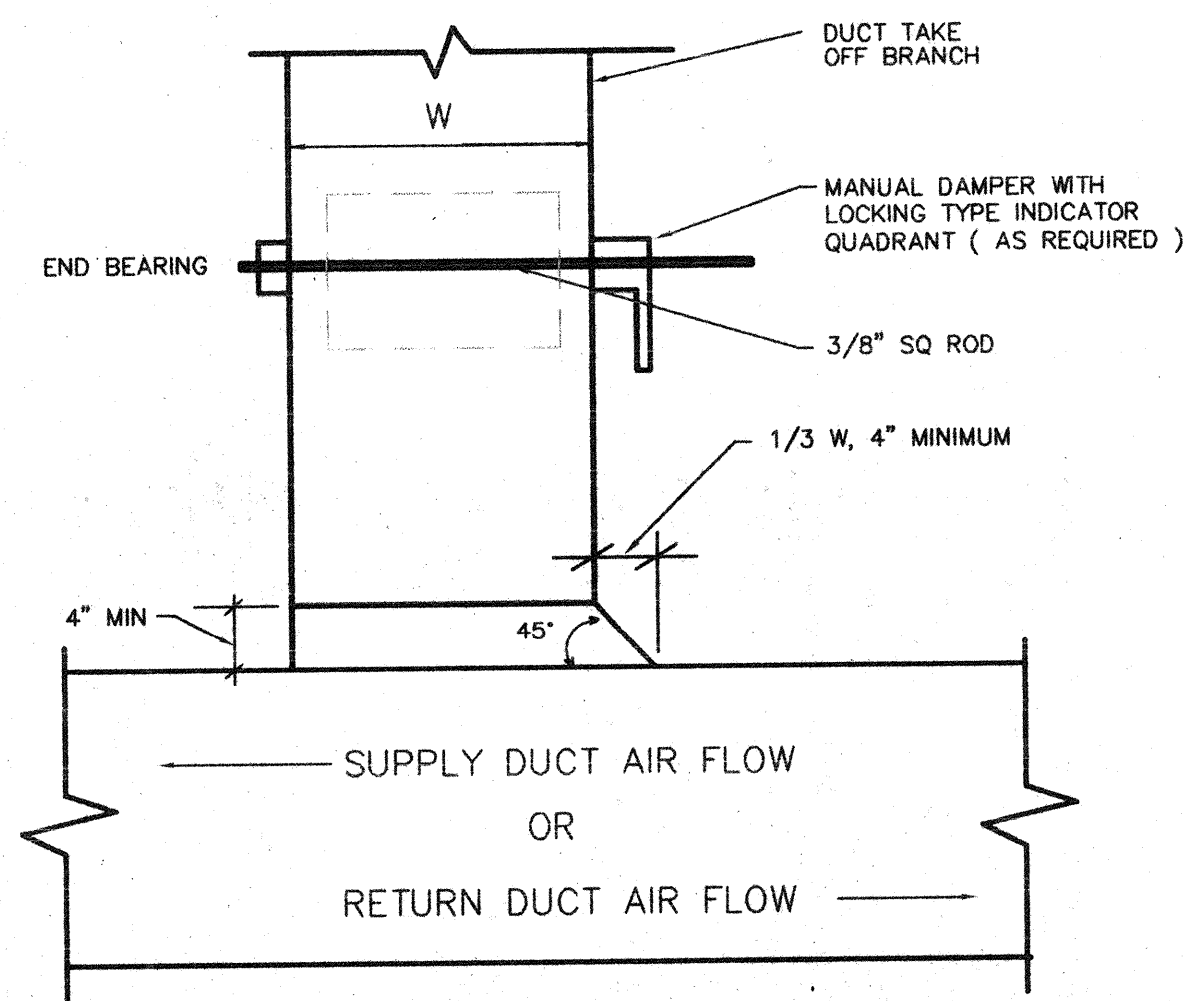
**D** FAN WITH BACKDRAFT DAMPER IN DUCT  
M-5 NO SCALE AV-WFAN



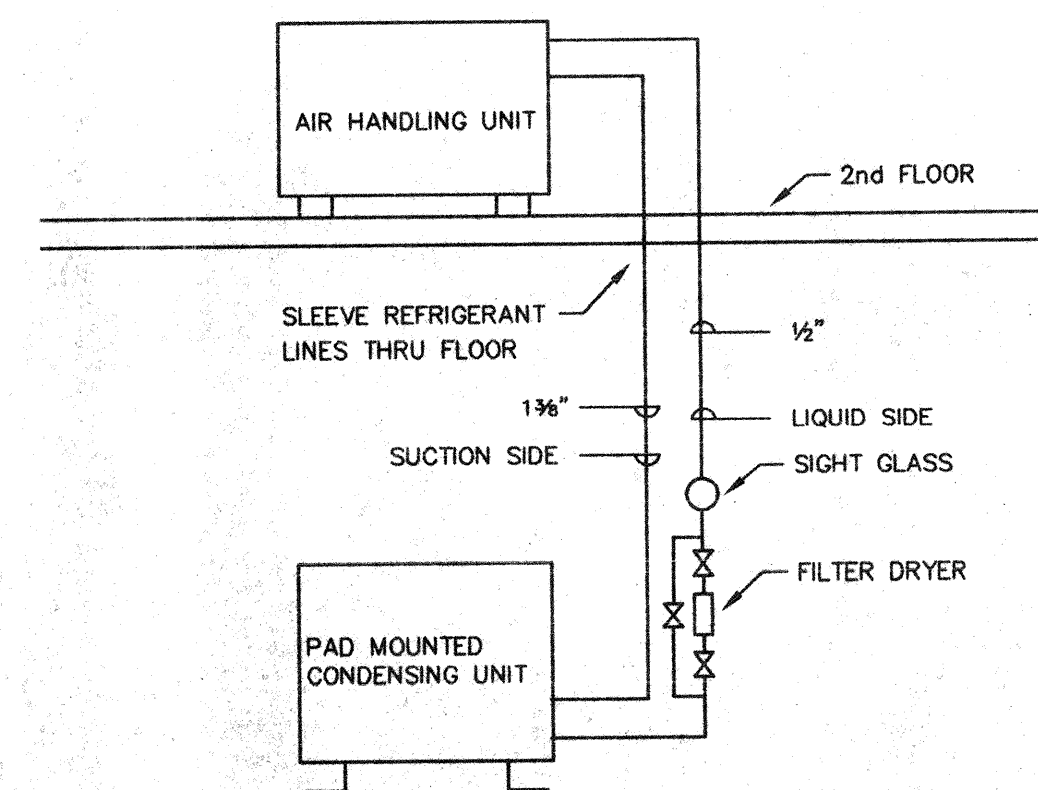
**E** ROOF EXHAUST FAN  
M-5 NO SCALE AV-REXH1



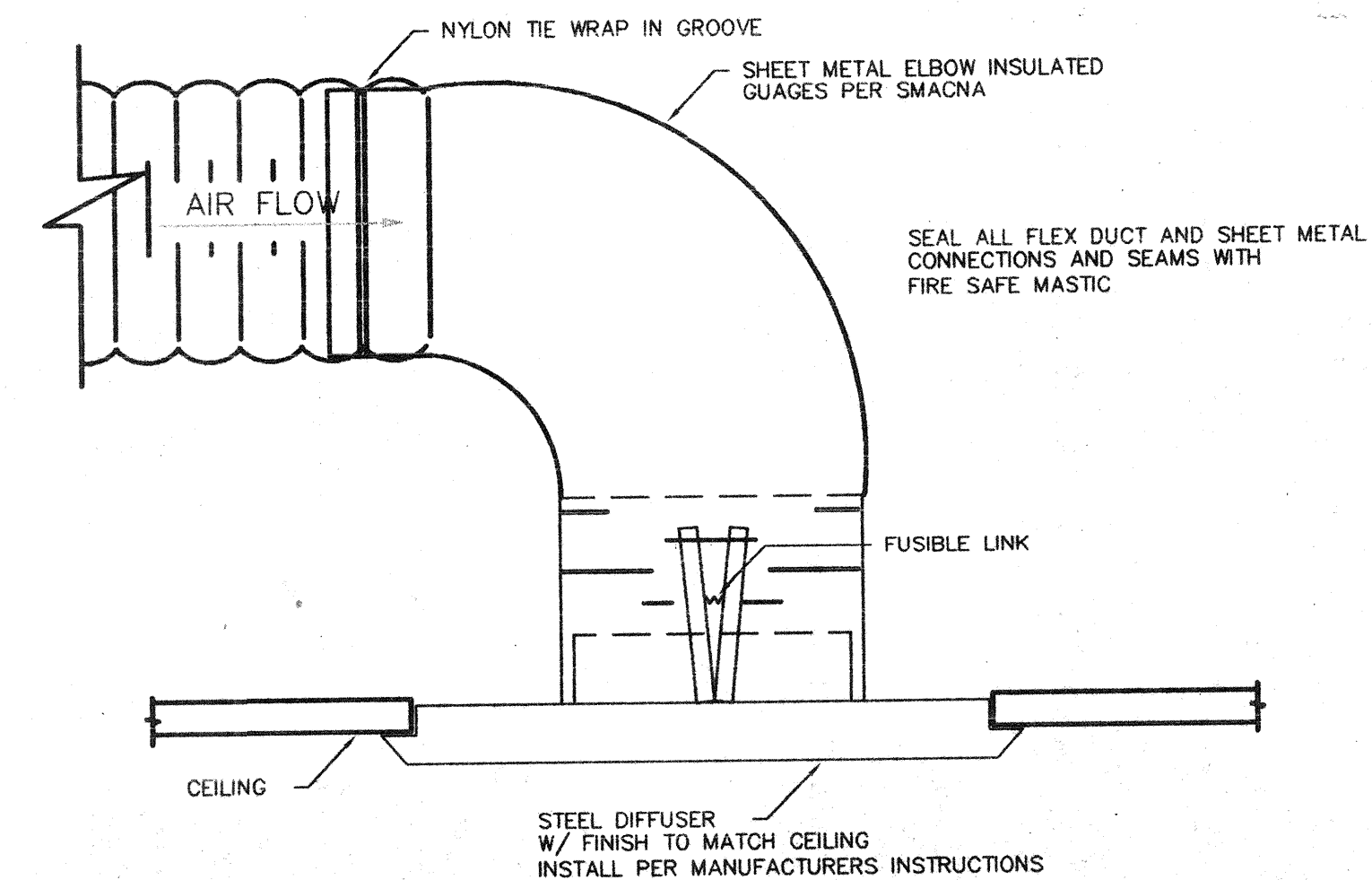
**F** FLEXIBLE DUCT TAKEOFF  
M-5 NO SCALE AD-FLEX5



**G** SUPPLY & RETURN BRANCH CONNECTION  
M-5 NO SCALE AD-SR-2



**H** REFRIGERANT PIPING SCHEMATIC  
M-5 NO SCALE AP-RPEN1



**I** END OF SUPPLY BRANCH  
M-5 NO SCALE AD-ENDF4

Proj. Mgr. JHB  
Job Capt. LHB  
Drawn by JHB  
LAH  
Rev'd by JFP

CONSULTANT  
**QED**  
QED ENGINEERING, INC.  
CONSULTING ENGINEERS  
3901 SW 47th Ave, Suite 402  
Dania, Florida 33314  
Ph 305-791-2020 Fx 584-2345

©COPYRIGHT  
THIS DOCUMENT IS PROPERTY OF PEACOCK COURTNEY ARCHITECTS, P.A. AND NO PART HEREIN SHALL BE USED EXCEPT FOR THE SPECIFIC PROJECT WITHOUT CONSENT OF PEACOCK COURTNEY ARCHITECTS, P.A.  
THIS DOCUMENT WAS PREPARED BY PEACOCK COURTNEY ARCHITECTS, P.A. ACCORDING TO THE TERMS OF THE GENERAL CONDITIONS OF THE CONTRACT FOR CONSTRUCTION. THIS DOCUMENT DOES NOT EITHER IN WHOLE OR IN PART CONSTITUTE ANY DIRECTION OR INSTRUCTION TO ANY CONTRACTOR WITH REGARD TO CONSTRUCTION MEANS, METHODS OR TECHNIQUES. BY THIS DOCUMENT THE ARCHITECT DOES NOT INTEND TO EXPRESS ANY OPINION, DIRECTION OR INSTRUCTION OF ANY KIND WHATSOEVER AS TO THE MANNER IN WHICH THE CONSTRUCTION WORK IS TO BE ACCOMPLISHED.

Description:  
Revisions

peacock courtney architects  
800 fairway drive suite 292  
deerfield beach, florida 33441 (305)428-8000

Project  
**VILLAGE OF MIAMI SHORES POLICE DEPARTMENT**  
THE VILLAGE OF MIAMI SHORES

Sheet Title  
**Details**

DATE 12/06/95  
PROJECT No. 95901  
Sheet No. **M-5**